

A photograph of a construction site showing a grid of rebar supported by grey plastic chairs. The rebar is rusty and the chairs are arranged in rows across a dirt and gravel surface. In the background, there are blue steel structures and a clear sky.

# THE STRONGEST REBAR SUPPORT

2025

[WWW.BAPRODUCTS.CA](http://WWW.BAPRODUCTS.CA)

1.866.300.3139

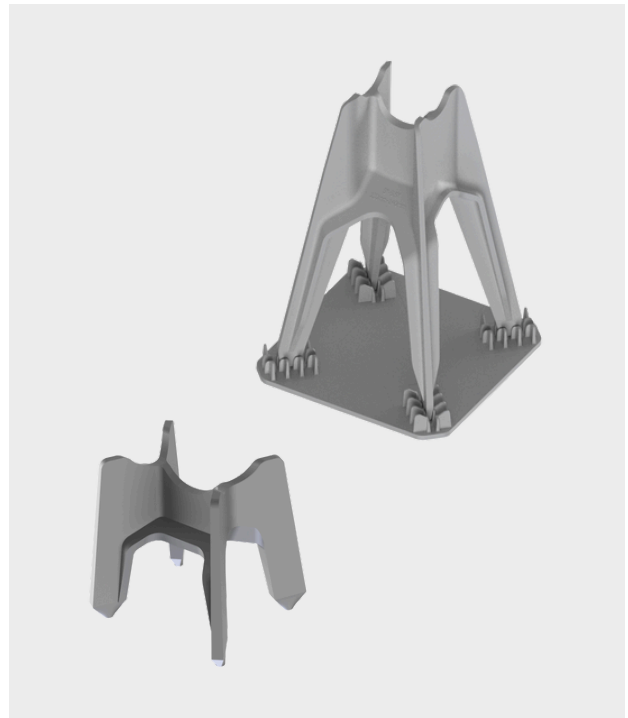
# T-CHAIR SERIES

## USING THE T-CHAIR:

Also known as a Tilt-Up rebar chair, the T-Chair offers strong rebar support where minimal footprint is required.

## FEATURES:

- TILT-UP / EXPOSED CONCRETE APPLICATIONS
- MINIMAL FOOTPRINT
- MAXIMUM CONCRETE CONSOLIDATION
- 2 SIZES PER CHAIR / LOW INVENTORY
- 850 LB LOAD RATING
- QUALIFIES AS A CRSI CLASS 1 BAR SUPPORT

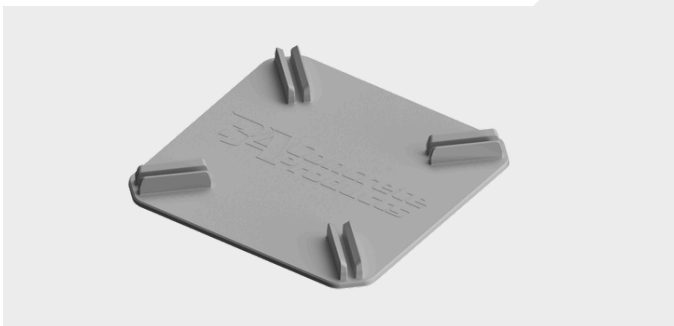


## APPLICATIONS:

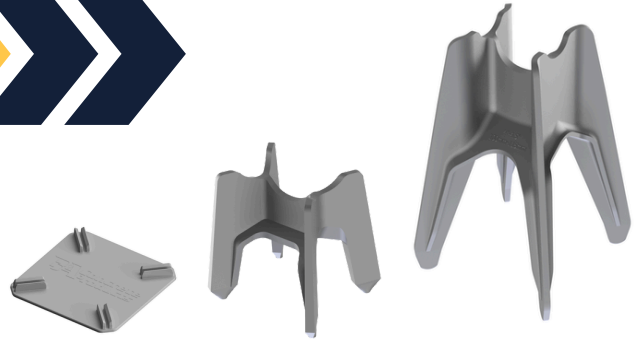
- ELEVATED SLABS
- PRECAST CONCRETE SLABS AND WALLS
- TILT-UP WALL PANELS
- POST-TENSIONED SLABS



## SANDPLATE COMPATIBLE



# T-CHAIR SERIES



MODEL #	CHAIR HEIGHT	BOX COUNT	SKID COUNT	BOXES PER SKID
RTC-100	1" - 1.25" (25-35mm)	1000	36,000	36
RTC-150	1.5" - 1.75" (35-45mm)	700	25,200	36
RTC-200	2" - 2.25" (50-58mm)	400	14,400	36
RTC-250	2.5" - 2.75" (65-70mm)	350	12,600	36
RTC-300	3" - 3.5" (75-90mm)	250	7,000	28
RTC-325	3.25" - 3.75" (85-95mm)	200	5,600	28
RTC-400	4" - 4.5" (100-115mm)	175	4,900	28
RTC-425	4.25" - 4.75" (108-120mm)	150	4,200	28
RTC-500	5" - 5.5" (130-145mm)	120	3,360	28
RTC-525	5.25" - 5.75" (135-145mm)	100	2,800	28
RTC-600	6" - 6.5" (150-165mm)	150	3,000	20
RTC-625	6.25" - 6.75" (160-170mm)	125	2,500	20
RTC-700	7" - 7.5" (180-190mm)	100	2,000	20
RTC-725	7.25" - 7.75" (185-195mm)	90	1,800	20
RTC-800	8" - 8.5" (200-215mm)	80	1,600	20
RTC-825	8.25" - 8.75" (210-225mm)	70	1,400	20

MODEL #	CHAIR HEIGHT	BAG COUNT	SKID COUNT	BAGS PER SKID
SAND PLATE: RBH-SP	3.75" x 3.75" (95mm)	500	13,000	26 

# HD BOLSTER CHAIR

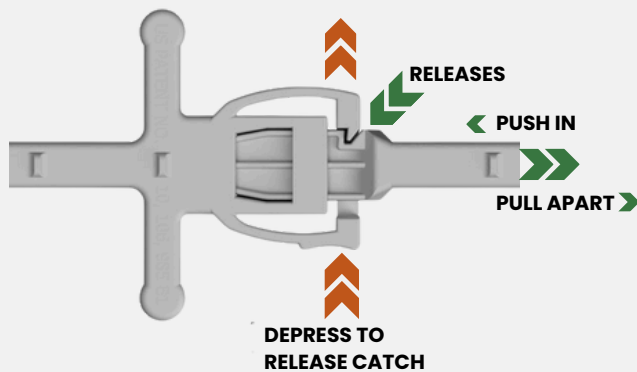
## USING THE HD BOLSTER:

For supporting rebar at greater heights, BA Concrete Products designed the HD Bolster. Qwik-Lok ends are connectible, achieving any lengths desired for large scale construction projects.

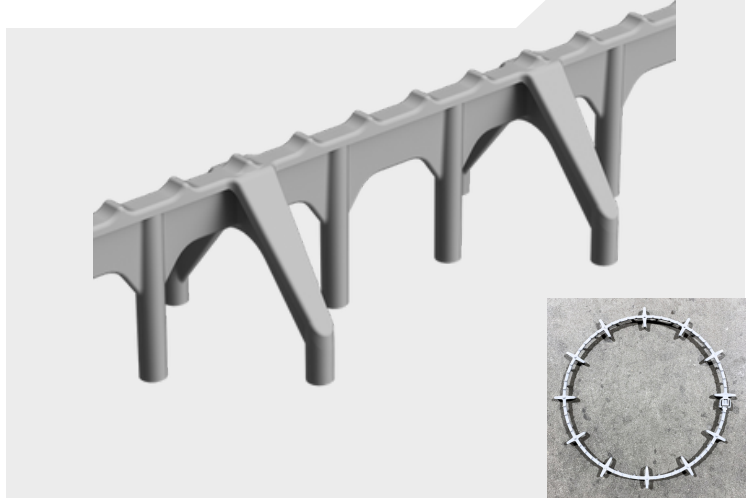
## APPLICATIONS:

- ELEVATED SLABS
- PRECAST CONCRETE SLABS AND WALLS
- TILT-UP WALL PANELS
- POST-TENSIONED SLABS

## QWIK-LOK CONNECT/DISCONNECT



## NEW AND IMPROVED



## FEATURES:

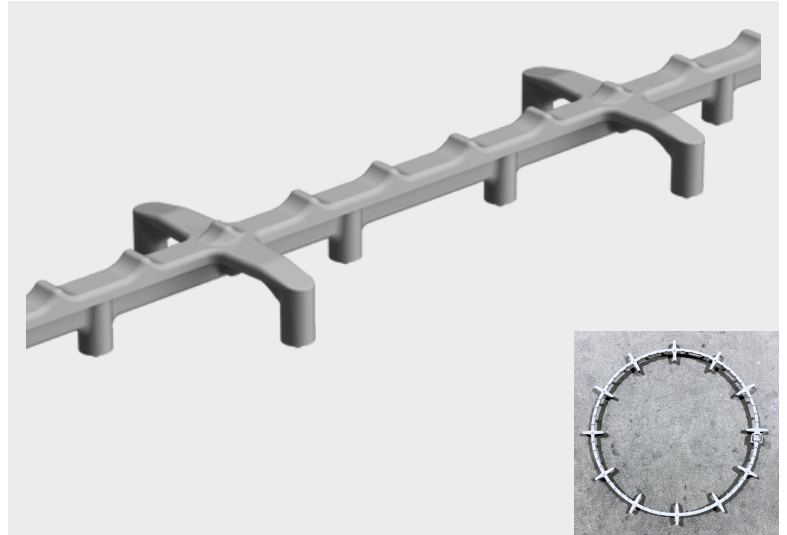
- GREATER STABILITY AND STRENGTH THAN STANDARD BOLSTERS
- UP TO 6 INCH COVER HEIGHT
- CONSTRUCTED OUT OF A DURABLE NON-CORROSIVE POLYCARBONATE MATERIAL
- POINTS ON LEGS ENSURE MINIMAL SURFACE CONTACT
- MANUFACTURED IN 5FT LENGTHS

PART NO.	CHAIR HEIGHT	BUNDLE COUNT	BOX PER SKID	SKID SIZE	SKID WEIGHT
HDB-300	3" (76mm)	COMING SOON	COMING SOON	COMING SOON	COMING SOON
HDB-350	3.5" (89mm)				
HDB-400	4" (102mm)	COMING SOON	COMING SOON	COMING SOON	COMING SOON
HDB-450	4.5" (114mm)				
HDB-500	5" (127mm)	COMING SOON	COMING SOON	COMING SOON	COMING SOON
HDB-550	5.5" (140mm)				
HDB-600	6" (152mm)	COMING SOON	COMING SOON	COMING SOON	COMING SOON

# SLAB BOLSTER SERIES

## USING THE SLAB BOLSTER:

- QWIK-LOK TECHNOLOGY
- CONSTRUCTED OUT OF A DURABLE NON-CORROSIVE POLYCARBONATE MATERIAL
- POINTED LEGS ENSURE MINIMAL SURFACE CONTACT
- INDIVIDUAL PIECES EASILY SNAP/UNSNAP TOGETHER TO FORM CONTINUOUS LENGTHS
- MANUFACTURED IN 2.5FT, 5FT, & 10FT LENGTHS
- QUALIFIES AS A CRSI CLASS 1 BAR SUPPORT

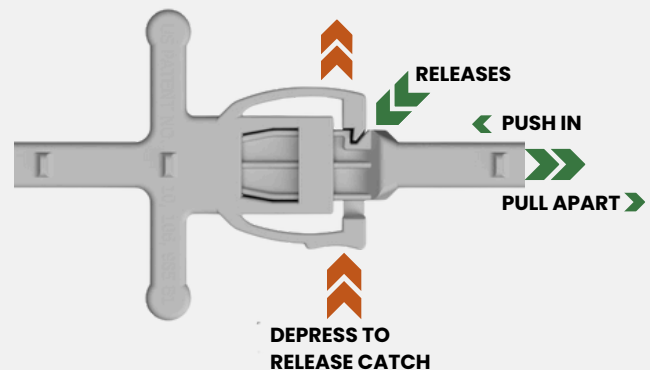


## APPLICATIONS:

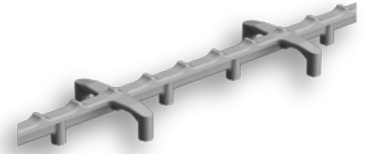
- ELEVATED SLABS
- PRECAST SLABS, WALL PANELS, AND BRIDGE DECKS AND GIRDERS
- TILT-UP WALL PANELS
- POST-TENSIONED SLABS



## QWIK-LOK CONNECT/DISCONNECT



# SLAB BOLSTER SERIES

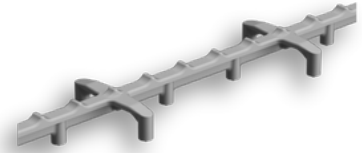


## 2.5 FOOT LENGTHS

PART NO.	CHAIR HEIGHT	LIN FT/BOX	LIN FT/SKID
CRC 075-025	0.75in (20mm)	375	9000
CRC 100-025	1.00in (25mm)	300	7200
CRC 125-025	1.25in (30mm)	250	6000
CRC 150-025	1.50in (40mm)	225	5400
CRC 175-025	1.75in (45mm)	200	4800
CRC 200-025	2.00in (50mm)	187.5	4500
CRC 250-025	2.50in (65mm)	150	3600
CRC 275-025	2.75in (70mm)	150	3600
CRC 300-025	3.00in (75mm)	125	3000
CRC 350-025	3.50in (90mm)	100	2400
CRC 400-025	4.00in (100mm)	75	1800



# SLAB BOLSTER SERIES



## 5 FOOT LENGTHS



PART NO.	CHAIR HEIGHT	LIN FT/BUNDLE	LIN FT/SKID
CRC 075-05	0.75in (20mm)	100	9100
CRC 100-05	1.00in (25mm)	100	7200
CRC 125-05	1.25in (30mm)	100	6000
CRC 150-05	1.50in (40mm)	100	5000
CRC 175-05	1.75in (45mm)	100	4500
CRC 200-05	2.00in (50mm)	100	4000
CRC 250-05	2.50in (65mm)	100	3200
CRC 275-05	2.75in (70mm)	50	3000
CRC 300-05	3.00in (75mm)	50	2500
CRC 350-05	3.50in (90mm)	50	1250
CRC 400-05	4.00in (100mm)	50	1000

## 10 FOOT LENGTHS



PART NO.	CHAIR HEIGHT	LIN FT/BUNDLE	LIN FT/SKID
CRC 100-10	1.00in (25mm)	100	9000
CRC 150-10	1.00in (40mm)	100	6400



- 10' LENGTHS - SKIDS TRIPLE STACKED
- 5' LENGTHS - SKIDS DOUBLE STACKED
- 2.5' LENGTHS - BOXED

# TILT-UP SLAB BOLSTER SERIES

## USING THE TILT-UP BOLSTER:

- MINIMAL SURFACE CONTACT WITH FEWER SUPPORT LEGS
- PREVENTS TILT-UP WALL PANEL HAIRLINE CRACKING
- CONSTRUCTED OUT OF A DURABLE NON-CORROSIVE POLYCARBONATE MATERIAL
- INDIVIDUAL PIECES EASILY SNAP/UNSNAP TOGETHER TO FORM CONTINUOUS LENGTHS
- MANUFACTURED IN 2.5FT & 5FT LENGTHS



## NEW AND IMPROVED



## APPLICATIONS:

- TILT-UP WALL PANELS
- CASTING ON SLAB
- PRECAST

## 2.5 FOOT LENGTHS

PART NO.	CHAIR HEIGHT	LIN FT/BOX	BOX PER SKID	SKID SIZE	SKID WEIGHT
CRCT-100	1"	300 FT	24	4'x4'x7'	1,100 lbs
CRCT-125	1.25"	250 FT	24	4'x4'x7'	1,000 lbs
CRCT-150	1.5"	225 FT	24	4'x4'x7'	950 lbs



# TUFF-BACK BEAM BOLSTER

## USING THE TUFF BACK:

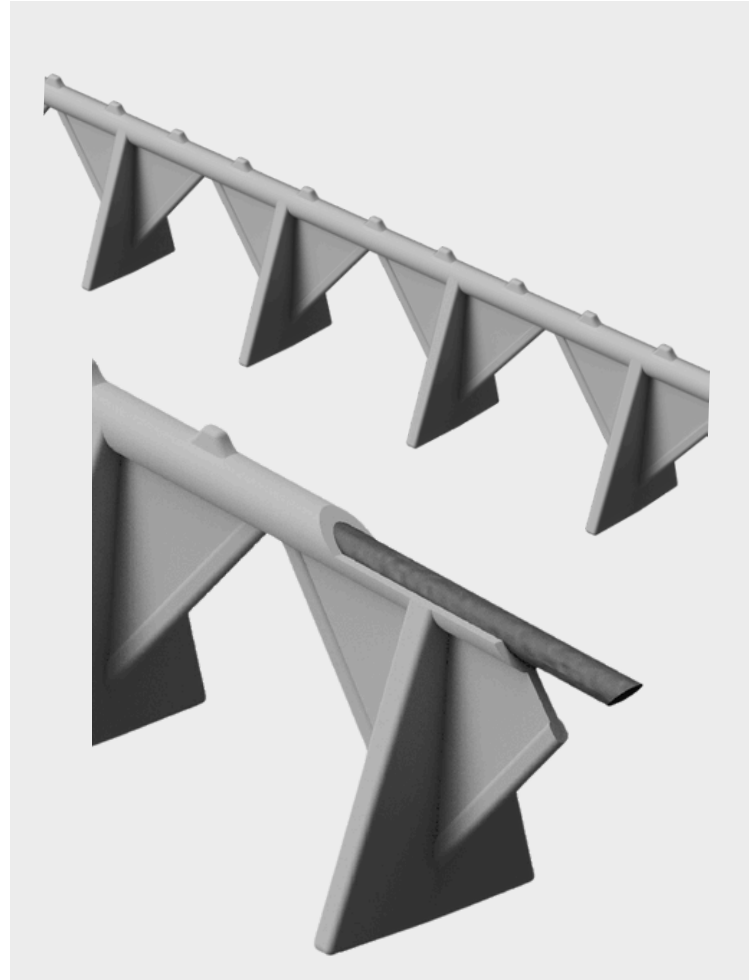
Simplistic plastic reinforced rebar chair lengths for durable reinforcement. It provides extra rigidity for heavy rebar mats.

## FEATURES:

- HEAVY DUTY TUFF-BACK BOLSTER WITH PLASTIC ENCASED STEEL ROD
- 3/4" - 2 1/2" COVER HEIGHTS
- 3,000 LBS LOAD CAPACITY
- MANUFACTURED IN 30" LENGTHS AND CRIMPED TOGETHER TO 60" LENGTH
- CAN BE SEPARATED AT CRIMP FOR INDIVIDUAL USE
- PRODUCT CAN BE BENT INTO ANY DESIRED SHAPE
- SHIPPED IN 5 FT LENGTHS BOXED

## APPLICATIONS:

- ELEVATED SLABS
- HEAVY REBAR MATS
- CAST IN PLACE WALLS



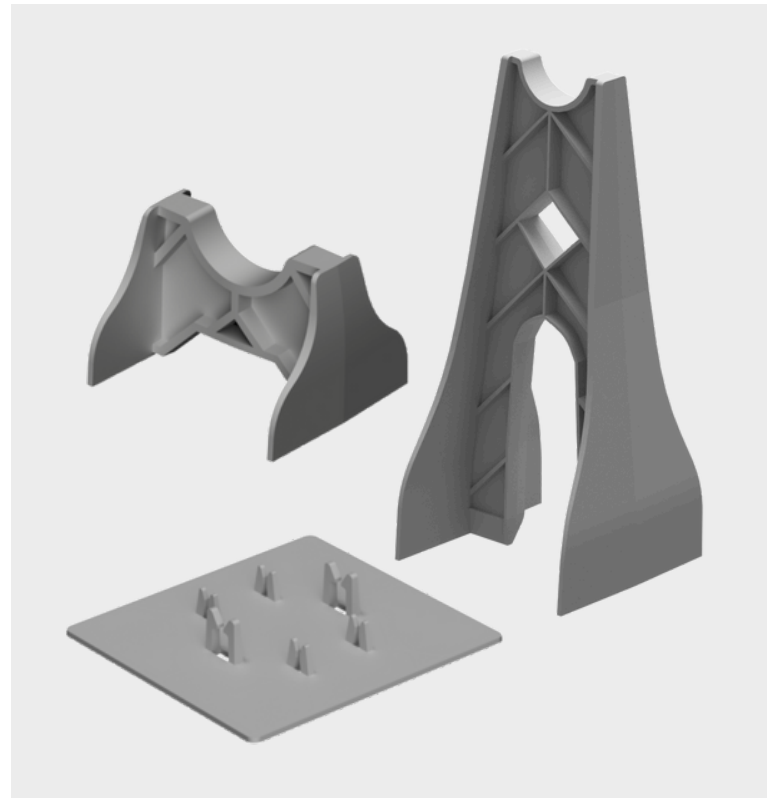
## 5 FOOT LENGTHS

PART NO.	CHAIR HEIGHT	5FT PSC PER BOX	BOX PER SKID	SKID WEIGHT
TBB-075	0.75" (20mm)	150 pcs (375 ft)	30 (11,250 ft)	1,900 lbs (860 kg)
TBB-100	1" (25mm)	140 pcs (350 ft)	30 (10,500 ft)	1,775 lbs (805 kg)
TBB-125	1.25" (30mm)	130 pcs (325 ft)	30 (9,750 ft)	1,647 lbs (750 kg)
TBB-150	1.5" (40mm)	120 pcs (300 ft)	30 (9,000 ft)	1,521 lbs (700kg)
TBB-200	2" (50mm)	100 pcs (250 ft)	30 (7,500 ft)	1,468 lbs (670 kg)
TBB-250	2.5" (65mm)	80 pcs (200 ft)	30 (6,000 ft)	1,330 lbs (605 kg)

# H-CHAIRS

## USING THE H-CHAIR:

Also known as a Linden Chair, the H rebar chairs offer the strongest rebar support available. Specifically designed to support heavy reinforcement in concrete foundations, heavy slabs and specialty structures. Sand plates can be easily clipped on to adapt to softer surfaces.



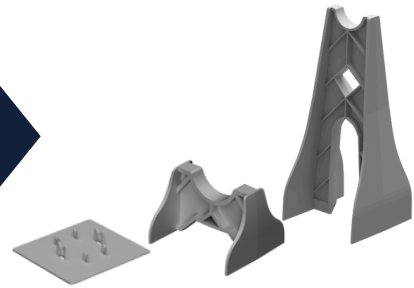
## FEATURES:

- OVER 20 HEIGHT OPTIONS AVAILABLE 1" TO 11" SIZING (½" INCREMENTS)
- ACCEPTS FROM #3 - #8 REBAR 1000 LBS WEIGHT CAPACITY
- WIDE BASE ALLOWS FOR SOLID FOOTING
- CONSTRUCTED OUT OF A DURABLE NON-CORROSIVE PLASTIC
- QUALIFIES AS A CRSI CLASS 1 BAR SUPPORT

## APPLICATIONS:

- SLAB ON GRADE
- CAST IN PLACE - ELEVATED SLABS

# H-CHAIR SERIES



MODEL NO.	CHAIR HEIGHT	BAG COUNT	SKID COUNT	BAGS PER SKID
RBH-1	1" (25mm)	500	32,000	64
RBH-125	1.25" (30mm)	500	32,000	64
RBH-15	1.5" (40mm)	500	25,600	64
RBH-2	2" (50mm)	400	22,400	64
RBH-25	2.5" (60mm)	350	19,200	64
RBH-275	2.75" (70mm)	300	9,750	26
RBH-3	3" (75mm)	375	9,750	26
RBH-35	3.5" (90mm)	375	7,800	26
RBH-4	4" (100mm)	300	7,800	26
RBH-45	4.5" (115mm)	300	5,200	26
RBH-5	5" (130mm)	200	4,680	26
RBH-55	5.5" (140mm)	180	3,640	26
RBH-6	6" (150mm)	140	3,380	26
RBH-65	6.5" (165mm)	130	2,340	26
RBH-7	7" (180mm)	90	2,210	26
RBH-75	7.5" (190mm)	85	1,950	26
RBH-8	8" (200mm)	80	1,300	26
RBH-85	8.5" (215mm)	75	1,300	26
RBH-9	9" (230mm)	50	1,300	26
RBH-95	9.5" (240mm)	50	1,300	26
RBH-10	10" (255mm)	50	1,300	26
RBH-105	10.5" (266mm)	50	1,300	26
RBH-11	11" (280mm)	45	1,170	26

MODEL NO.	CHAIR HEIGHT	BAG COUNT	SKID COUNT	BAGS PER SKID
SANDPLATE: RBH-SP	3.75"x3.75" (95mm)	500	13,000	26 

# COLUMN SLIDER SERIES

## USING THE COLUMN SLIDER:

The Column Slider with its lightweight, ridged design has the ability to slide a rebar cage into a stationary form, guiding the spacing of the rebar from the form. Column sliders provide greater stability than Wheel Chairs.

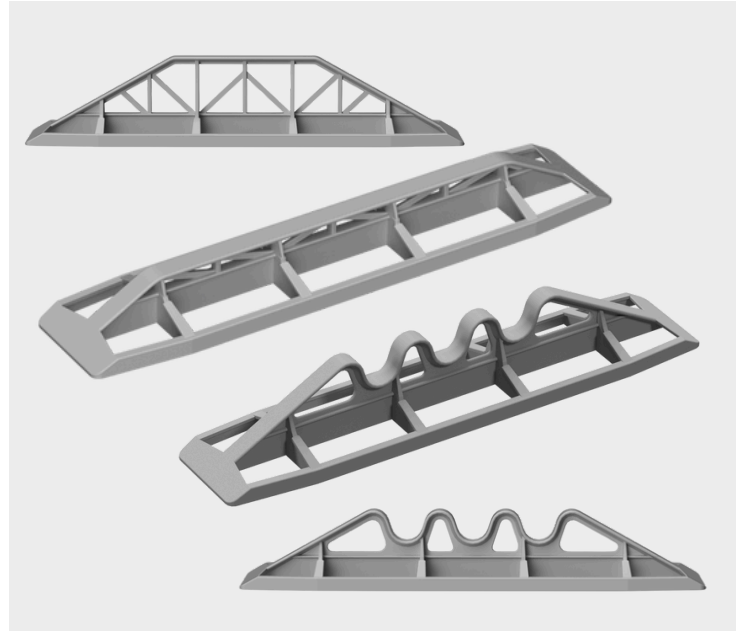
## FEATURES:

### CS (SMOOTH) COLUMN SLIDER

- THREE SIZE OPTIONS AVAILABLE
- OPTIMAL DESIGN FOR BELOW-GROUND PILING AND CAISSONS

### CSR (RIDGED) COLUMN SLIDER

- FIVE SIZE OPTIONS AVAILABLE
- RIDGED DESIGN ENSURES MINIMAL SURFACE CONTACT
- OPTIMAL DESIGN FOR ABOVE GROUND EXPOSED CONCRETE



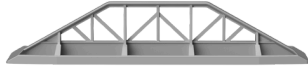
## APPLICATIONS:

- CAST IN PLACE - REBAR COLUMNS, CAGES, PILES, AND CAISSONS



# COLUMN SLIDER SERIES

## COLUMN SLIDER



MODEL NO.	CHAIR HEIGHT	BOX COUNT	SKID COUNT	BOXES PER SKID
CS-150P	1.5" (40mm)	84 pcs	2,016	24
CS-300P	3" (75mm)	50 pcs	1,200	24
CS-350P	3.5" (90mm)	45 pcs	1,080	24

## COLUMN SLIDER RIDGED



MODEL NO.	CHAIR HEIGHT	BOX COUNT	SKID COUNT	BOXES PER SKID
CSR-150P	1.5" (40mm)	84 pcs	2,016	24
CSR-200P	2" (50mm)	75 pcs	1,800	24
CSR-250P	2.5" (65mm)	60 pcs	1,440	24
CSR-300P	3" (75mm)	50 pcs	1,200	24
CSR-350P	3.5" (90mm)	45 pcs	1,080	24



# PUSH-ON WHEEL CHAIR SERIES

## USING THE PUSH-ON WC:

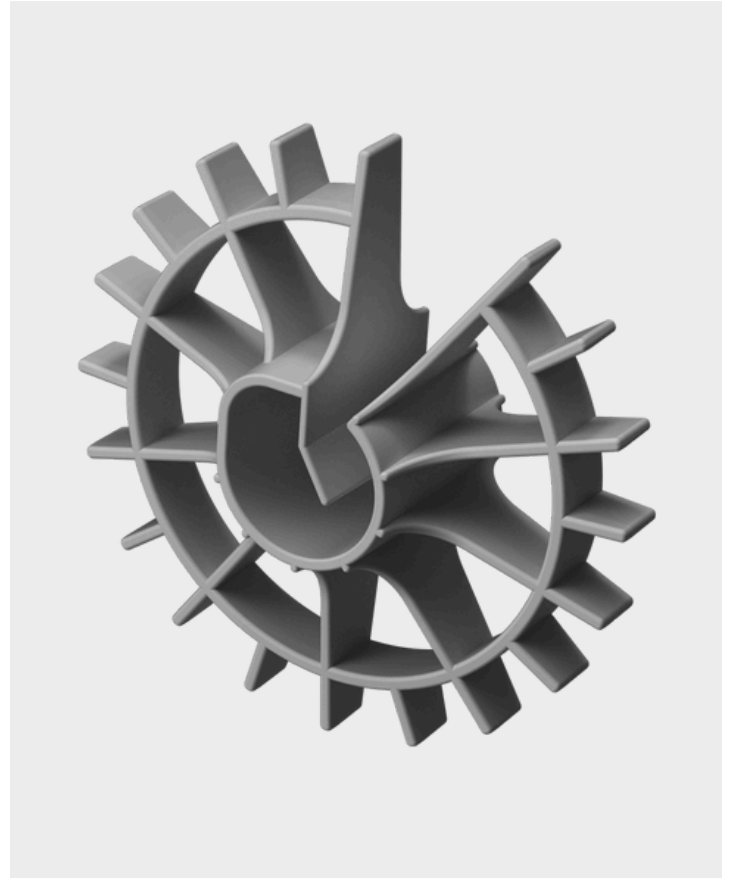
These Wheel chairs are ideal for vertical bar supports in walls, beams, or columns.

### FEATURES:

- 1", 1 1/4", 1 1/2", 2" & 3" COVER
- ACCEPTS #3 - #6 REBAR
- RODS SNAP EASILY INTO CHAIRS

### APPLICATIONS:

- PRECAST - BARRIERS, SLABS, AND PIPES
- CAST IN PLACE - WALLS, BEAMS, AND COLUMNS



MODEL NO.	CHAIR HEIGHT	BOX COUNT	SKID COUNT	BOXES PER SKID
RWC-010	1" (25mm)	1,500 pcs	30,000	20
RWC-125	1.25 (30mm)	1,200 pcs	24,000	20
RWC-015	1.5" (40mm)	700 pcs	14,000	20
RWC-020	2" (50mm)	400 pcs	8,000	20
RWC-030	3" (75mm)	170 pcs	3,400	20

# LOCKING WHEEL CHAIR

## FEATURES:

- RATCHETING LOCK SYSTEM
- STRONGER THAN STANDARD PUSH ON WHEEL CHAIRS
- 1"-3" COVER
- FITS #3-#8 REBAR

## APPLICATIONS:

- PRECAST - BARRIERS, SLABS, AND PIPES
- CAST IN PLACE - WALLS, BEAMS, AND COLUMNS
- CONCRETE PILES AND CAISSON CAGES



MODEL NO.	COVER HEIGHT	REBAR SIZE	BOX COUNT	SKID COUNT	BOXES PER SKID
RWCL - 010	1"	WIRE - #4	1,250	25,000	20
RWCL - 015	1.5"	#3 - #6	500	10,000	20
RWCL - 020	2"	#3 - #7	250	5,000	20
RWCL - 030	3"	#3 - #8	125	2,500	20

# HD LOCKING WHEEL CHAIR

## USING HD LOCKING WHEELS:

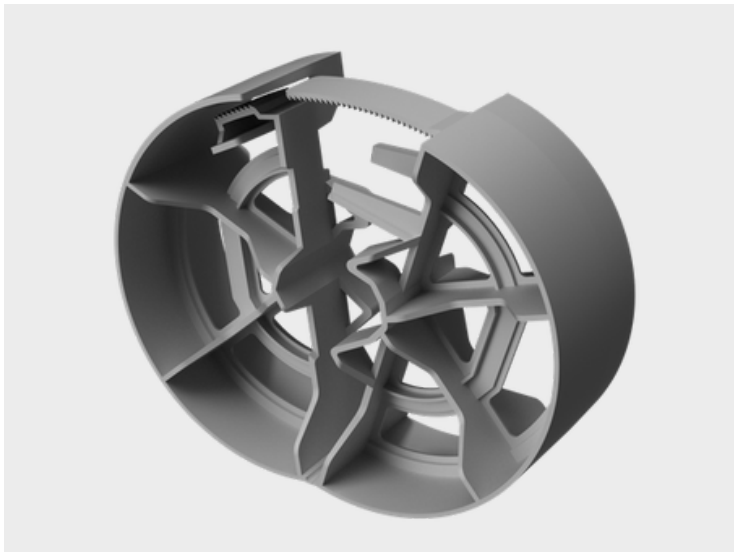
The Heavy Duty Wheel Chair option helps preserve the proper spacing, even under pressure of large cages.

## FEATURES:

- HEAVY DUTY CAGE ROLLER
- RATCHETING LOCK SYSTEM
- 6" DIAMETER, 3" COVER
- FITS #3-#9 REBAR

## APPLICATIONS:

- HEAVY DUTY CAISSON/PILING CAGES
- HEAVY REBAR CAGES



MODEL NO.	COVER	BOX COUNT	SKID COUNT	BOXES PER SKID
RWC-30L-HD	3" (75mm)	60 pcs	1,200	20



# X-CHAIR SERIES

## USING THE X-CHAIR:

Compact and economical. That describes the X chair in its variety of uses in rebar mats and plumbing pipe prep.

## FEATURES:

- 1/2" - 2" HEIGHTS AVAILABLE
- A SCREW/TIE WIRE HOLE ALLOWS THE FASTENING OF THE CHAIR TO FORMS
- ACCEPTS #3 - #6 REBAR
- 1,400 LBS CAPACITY
- QUALIFIES AS A CRSI CLASS 1 BAR SUPPORT

## APPLICATIONS:

- ELEVATED SLABS
- PRECAST CONCRETE SLABS AND WALLS
- TILT-UP WALL PANELS
- POST-TENSIONED SLABS
- CAST IN PLACE - SPACING PLUMBING PIPES EASILY



MODEL NO.	CHAIR HEIGHT	BAG COUNT	SKID COUNT	BAGS PER SKID
RCX - 05	0.5" (15mm)	2,000 pcs	128,000	64
RCX - 075	0.75 (20mm)	1,500 pcs	96,000	64
RCX - 10	1" (25mm)	750 pcs	48,000	64
RCX - 15	1.5" (40mm)	500 pcs	32,000	64
RCX - 20	2" (50mm)	350 pcs	22,400	64

# SAND CHAIR SERIES

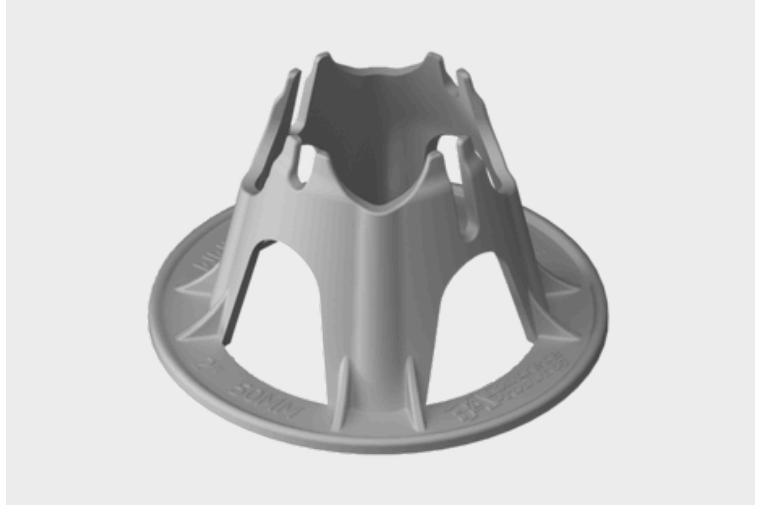
## USING THE SAND CHAIR:

### FEATURES:

- 6 DUAL-HEIGHT OPTIONS AVAILABLE: 1" - 6" SIZING
- ACCEPTS UP TO #8 REBAR & 1/8"-3/16" WIRE MESH
- WIDE BASE ALLOWS FOR SOLID FOOTING ON SOFTER SURFACES
- COMPACT STACKING
- QUALIFIES AS A CRSI CLASS 1 BAR SUPPORT

### APPLICATIONS:

- SLAB ON GRADE
- INSULATED SLABS



MODEL NO.	CHAIR HEIGHT	BOX COUNT	SKID COUNT	BOXES PER SKID
RC - 001	1" - 1.5" (25-40mm)	300 pcs	10,800	40
RC - 01	1.5" - 2" (40-50mm)	250 pcs	10,000	40
RC - 02	2.5" - 3" (65-75mm)	250 pcs	9,000	36
RC - 03	3.5" - 4" (89-102mm)	160 pcs	5,120	32
RC - 04	4.5" - 5" (115-125mm)	160 pcs	4,480	28
RC - 05	5.5" - 6" (140-150mm)	120 pcs	3,360	28

# CONCRETE CHAIR SERIES

## USING THE CONCRETE CHAIR:

Designed to maintain the material integrity of the concrete cover. The Concrete Rebar Chair is specifically designed to maximize durability and prevent corrosion.

### FEATURES:

- THE BRICKS HAVE A HOLE FOR TIE WIRE WHERE NEEDED
- HIGH STRUCTURAL STRENGTH AND STIFFNESS
- 65 MPA LOAD RATING
- BRICKS ALLOW EXACT, CONSISTENT ELEVATIONS OF REINFORCEMENT AND CONCRETE COVER
- 7 DOBIES PER STRIP THAT EASILY BREAK OFF INTO INDIVIDUAL PIECES

### APPLICATIONS:

- SLAB ON GRADE
- LASER SCREEDED SLABS
- HEAVY REBAR MATS



MODEL NO.	CHAIR HEIGHT	PALLET COUNT
CON-23	3"x3"x2" (50-75mm)	1,500
CON-34	4"x4"x3" (75-100mm)	792
CON-45	4.5"x4.5"x2.25" (57-115mm)	500 pcs

# MESH CHAIR

## USING THE MESH CHAIR:

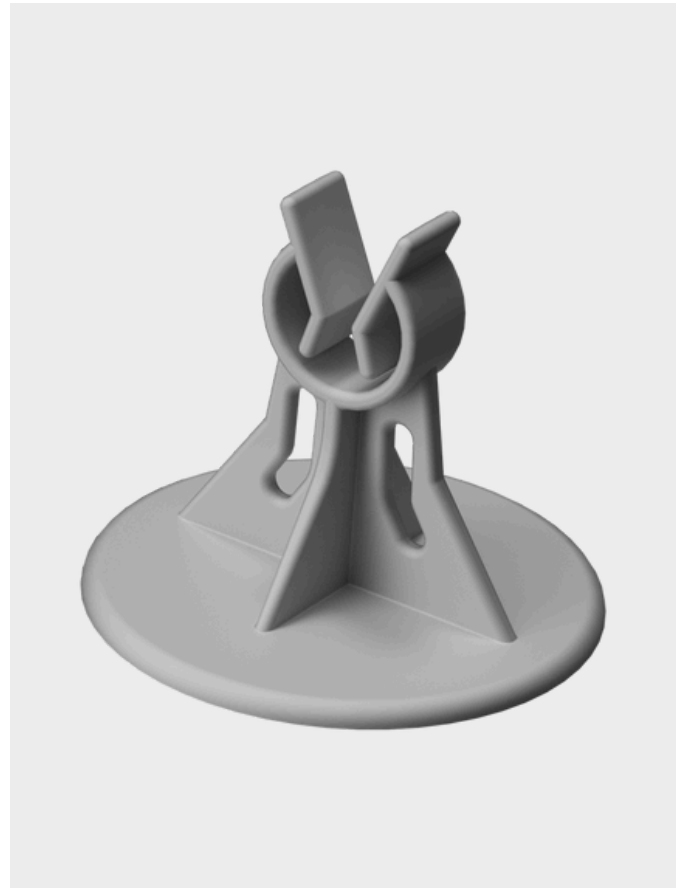
When you just need simplicity, it's the Mesh Chair in the wire placer's world.

## FEATURES:

- 4 HEIGHT OPTIONS
- 350 LBS CAPACITY
- ACCEPTS 1/8" - 3/8" (3MM - 10MM) MESH
- REBAR/MESH SNAPS EASILY INTO CHAIRS

## APPLICATIONS:

- PRECAST SLABS AND WALLS
- PRECAST SLATS



MODEL NO.	CHAIR HEIGHT	BOX COUNT	SKID COUNT	BOXES PER SKID
TCM-100	1" (25mm)	500 pcs	30,000	60
TCM-150	1.5" (40mm)	500 pcs	30,000	60
TCM-200	2" (50mm)	500 pcs	24,000	48
TCM-300	3" (75mm)	500 pcs	15,000	30

# MUSHROOM SAFETY CAP

## USING THE MUSHROOM CAP:

The Rebar Mushroom Cap is a HDPE universal protective cap used to cover the ends of protruding rebar to reduce injury on jobsites.

### FEATURES:

- FITS #3 - #8 REBAR
- HIGHLY VISIBLE BRIGHT ORANGE COLOR
- REUSABLE: MADE OF DURABLE HDPE

### APPLICATIONS:

- PRECAST SITE SAFETY
- TILT-UP SITE SAFETY
- CAST IN PLACE SITE SAFETY



# 2X4 SAFETY CAP



### FEATURES:

- FITS #3 - #8 REBAR, THE MOST COMMON SIZES FOUND ON JOBSITES.
- 2 CAPS PROTECT 8FT WITH 2X4 BOARDS
- WITHSTANDS 250 LB DROP FROM 10FT
- BRIGHT ORANGE COLOUR FOR EASY VISIBILITY
- MADE FROM DURABLE HDPE FOR MANY REUSES

### APPLICATIONS:

- PRECAST SLAB SITE SAFETY
- TILT-UP SLAB SITE SAFETY
- CAST IN PLACE SITE SAFETY

# ECO-XPS FOAM SHEETS

## THE DETAILS

### FEATURES:

- R-VALUE: 1" (R5), 1.5" (R7.5), AND 2" (R10)
- MADE USING POST CONSUMER TYPE 6 RECYCLED POLYSTYRENE.
- COMES IN 2FTX8FT & 4FTX8FT SHEETS

### APPLICATIONS:

- PRECAST PANELS
- OUTSIDE WALL INSULATION
- CONCRETE FLOOR INSULATION
- CONCRETE BASEMENT INSULATION



# CURING BLANKETS



## THE DETAILS

THESE DURABLE, INSULATED FABRIC TARPS ARE DESIGNED TO KEEP FRESHLY POURED CONCRETE PROTECTED AND TO ALLOW THEM TO CURE AS DESIGNED.

### FEATURES:

- 5MM LAYER THICKNESS
- ORANGE COVER
- GROMMETS 24" ON CENTER

### APPLICATIONS:

- PROTECT CAST-IN-PLACE CONCRETE
- SLABS, TILT-UP AND PRECAST
- ON SITE RAW MATERIALS

# REBAR TIE WIRE

## THE DETAILS

THIS 16.5 GAUGE COIL BAILING WIRE IS ROBUST AND IDEALLY FLEXIBLE WIRE. THE GAUGE AND STRENGTH MAKE IT SUPERIOR TO SPOOL BAILING WIRE AND IS UNIVERSALLY USED TO SECURE REINFORCEMENT FOR SLAB MATS, COLUMNS, BEAMS AND VERTICAL WALLS.

### FEATURES:

- WIRE GAUGE: 16.5 GA
- COIL WEIGHT: ~3 1/8LB
- MATERIAL: ANNEALED STEEL
- 16 ROLLS PER BOX/48 BOXES PER SKID
- PART # RTW-165
- EASILY FITS MOST TIE WIRE REELS



# PREMIUM FORM OIL



### FEATURES:

- COST EFFECTIVE
- HIGH COVERAGE RATE
- ZERO DUSTING AND ZERO STAINING
- ELIMINATES "BUG HOLES" FOR HIGH QUALITY FINISH
- LOW OR NO ODOUR
- AVAILABLE IN 1000 LITER TOTES, 55 GALLON DRUMS, 5 GALLON PAILS

### APPLICATIONS:

- 90W - GENERAL USE CONTRACTOR PROJECTS
- 89W - PRECAST/ARCHITECTURAL GRADE
- USE ON WOOD OR STEEL FORMS

**SOLID SOLUTIONS,  
CONCRETE RESULTS.**



## **WAREHOUSE LOCATIONS**

### **MANITOBA BRANCH (HOME)**

1(866) 300-3139  
SALES@BAPRODUCTS.CA

### **ALBERTA BRANCH**

1(866) 300-3139  
1(780) 233-6249 - LUKE  
SALES.AB@BAPRODUCTS.CA

### **QUEBEC BRANCH**

1(866) 300-3139  
1(819) 817-1714 - WILLIAM  
SALES.QC@BAPRODUCTS.CA

**WWW.BAPRODUCTS.CA**  
**MADE IN CANADA** 

